

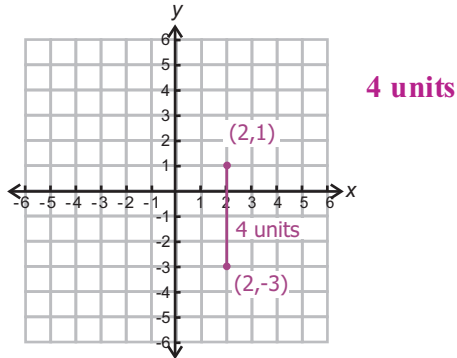
Guided Practice 10.3

NAME _____

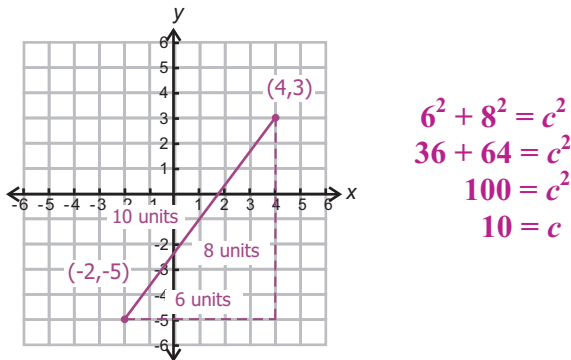
Module 10 Coordinate Geometry and Spatial Visualization Lesson 3 Coordinate Geometry

Set 1

- 1 Find the distance between (2, 1) and (2, -3).

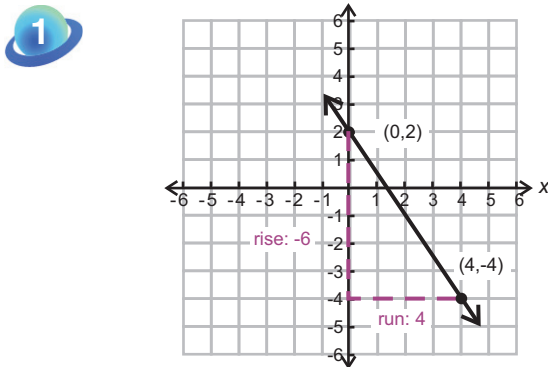


- 2 Find the distance between (-2, -5) and (4, 3).

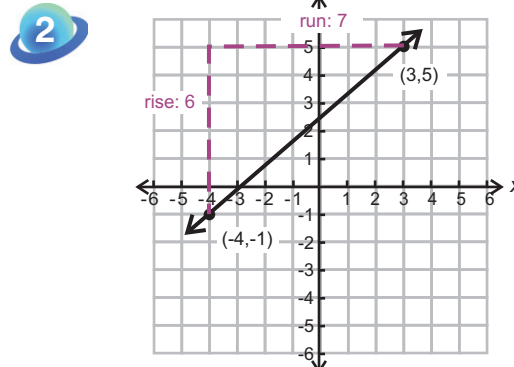


Set 2

Find the slope.



$$\text{Slope: } \frac{\text{rise}}{\text{run}} = \frac{-6}{4} = -\frac{3}{2}$$

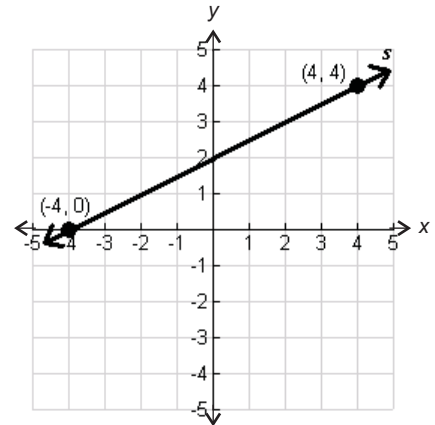


$$\text{Slope: } \frac{\text{rise}}{\text{run}} = \frac{6}{7}$$

Set 3

1 Find the slope of any line perpendicular to line s .

Slope of line s : $\frac{1}{2}$
Slope of any line \perp to s : -2



2 Find the slope of any line parallel to line r .

Slope of line r : $-\frac{7}{6}$
Slope of any parallel line: $-\frac{7}{6}$

